



## CARTE 2014 | LOCATION

The **Salone delle Fontane** represents one of the most prestigious, suggestive and elegant conference's location in Rome.

It is an elegant area, extremely spacious, with Carrara marble floors and columns, natural light by twelve large windows 9 meters high.

On the wall at the end of Salone Severini, there is the artwork of Gino Severini dating 1953 and painted over the maronite panels.



A network of outdoor fountains, richly adorned with engraved mosaic patterns, granite staircases and an expansive park edging round the venue, set the stage for the impressive hallway, designed in the style of monumentalist architecture by Italian architect Gaetano Minnucci at the beginning of the 1940s in connection with the "Universal Exposition" that was due to open in Rome in 1942.



# CONFERENCE&EXPO CARTE 2014

Roma - Salone delle Fontane 18/19 novembre

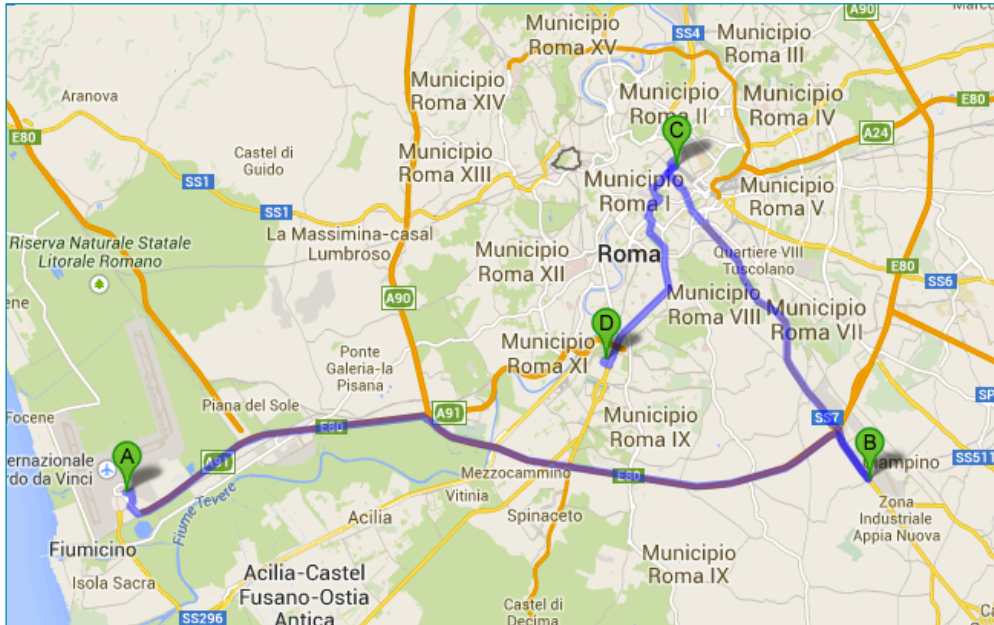
ABI Associazione  
Bancaria  
Italiana

CONSORZIO  
BANCOMAT

ABI  
EVENTI

## HOW TO REACH CARTE 2014

**Salone delle Fontane** is located in Via Ciro il Grande 10, in the Eur neighbourhood of Rome.



- A**     **Aeroporto Internazionale Leonardo da Vinci**
- B**     **Ciampino Aeroporto**
- C**     **Stazione Termini**
- D**     **Salone delle Fontane**

## DISTANCES

- Leonardo Da Vinci Fiumicino Airport | 20 Km
- Roma Ciampino Airport | 16 Km
- Roma Termini Railway | 9 Km
- City centre | 8 Km

## BY TRAIN

From the railway station of **Roma Termini**, take the **underground Line B (direction Laurentina)** and get down at **Eur Palasport stop**. Once out of the underground, at the **Europa/Colombo stop**, take one of the following **bus lines**:

- 762
- 763
- 764
- 767
- 779

(all in direction Agricoltura), the get down at the **Ciro il Grande stop**.



From the railway station of **Roma Termini**, take the underground **Line B (direction Laurentina)** and get down at **Eur Palasport stop**. Once out of the underground, at **Marconi/Gibilmanna stop**, take the **bus 170** (direction Agricoltura) for 3 stops and get down at the **Ciro il Grande stop**.

## BY AIR

From the **Fiumicino Airport** every 30 minutes there's the train **Leonardo Express**, that will get you at the **Termini railway** (approx in 35 minutes). Elsewhere you could take the **train to Roma-Eur, stop at: Eur Magliana**.

From **Ciampino Airport** take the **underground line A (direction Battistini)** and get down at the **Termini railway stop**. Elsewhere you could take the **bus Shuttle**, to the **Termini railway**.

To reach the Eur neighbourhood, please check the section "**By Train**".

## BY CAR

Exit at **Autostrada A1 Roma Sud**

From the **Grande Raccordo Anulare (GRA)** take the **exit 26 Roma Eur**. Follow to via Cristoforo Colombo and keep going in direction via della Previdenza Sociale and then via della Civiltà del Lavoro.

## Radio Taxi Useful Numbers

- +39 06 3570
- +39 06 5551
- +39 06 88177
- +39 06 4994
- +39 06 4157
- +39 06 6645

Check the website [www.comune.roma.it](http://www.comune.roma.it) to find the nearest taxi parking.

## Bus from the city center

### From Termini Railway

Bus Line 714 (Palazzo dello Sport) - every 7 minutes

Stop: Colombo/Agricoltura

From Piazza Venezia bus line 170 (Agricoltura) - every 15 minutes

Stop: Ciro il Grande

### Nearest Underground stations to Salone delle Fontane

Eur Palasport

Eur Fermi



## **HOTEL LIST IN AGREEMENT NEAR A CARTE 2014**

To facilitate those guests who are in need of spending the night in Rome for "CARTE 2014", ABIEventi contacted the hotels listed below and activated an agreement.

Please note that transaction with the hotel are in responsibility of individual guests. We strongly recommend to make, as soon as possible, the hotel reservation.

### **SHERATON ROMA HOTEL & CONFERENCE CENTER** | *Category: 4 stars*



**Generale:** Parcheggio, Servizio reception/portiere, Accesso per ospiti disabili, Camera VIP, Ascensore, Cassetta di sicurezza, Negozio di souvenir/regali, Riscaldamento, Deposito bagagli, Negozi, Aria condizionata, Servizio portineria.

**Attività:** Campo da tennis, Centro Fitness, Squash, Piscina scoperta (stagionale).

**Servizi:** Servizio in camera, Sale riunioni/banchetti, Centro Business, Servizio lavanderia, Lavaggio a secco, Internet, Autonoleggio, Banco escursioni, Servizio biglietteria, Internet Wi-Fi, Sportello Bancomat, Servizio navetta (a pagamento).

**Ristorazione:** Ristorante, Bar.

**Check-in** dalle 15:00

**Check-out** entro 12:00

**Carta di Credito**



**Website:** [www.sheratonerome.com](http://www.sheratonerome.com)

**Email:** [res497.sheraton.roma@sheraton.com](mailto:res497.sheraton.roma@sheraton.com)

**Recommended fee:** DUS Room | € 120,00  
Double room | € 140,00



**HOTEL DEI CONGRESSI** | *Category: 4 stars*



**Generale:** Servizio reception/portiere, Quotidiani, Giardino, Terrazza, Camere non-fumatori, Accesso per ospiti disabili, Camere familiari, Ascensore, Check-in e check-out rapidi, Riscaldamento, Deposito bagagli, Aria condizionata.

**Servizi:** Servizio in camera, Sale riunioni/banchetti, Centro Business, Servizio lavanderia, Lavaggio a secco, Servizio stireria, Internet, Fax, Internet Wi-Fi, Internet Wi-Fi gratuita.

**Ristorazione:** Ristorante, Bar, Prima colazione in camera.

**Check-in** dalle 14:00 entro 00:00

**Check-out** dalle 07:00 entro 12:00

**Carta di Credito**



**Website:** [www.hoteldeicongressiroma.com](http://www.hoteldeicongressiroma.com)

**Email:** [info@hoteldeicongressiroma.com](mailto:info@hoteldeicongressiroma.com)

**Recommended fee:** DUS Room | € 133,00  
Double Room | € 150,00



**HOTEL AREA** | *Category: 4 stars*



**Generale:** Servizio reception/portiere, Quotidiani, Giardino, Camere non-fumatori, Accesso per ospiti disabili, Camere familiari, Camera VIP, Parcheggio gratuito, Ascensore, Check-in e check-out rapidi, Cassetta di sicurezza, Camere insonorizzate, Riscaldamento, Deposito bagagli, Struttura interamente non-fumatori, Aria condizionata, Servizio portineria.

**Servizi:** Servizio in camera, Servizio lavanderia, Lavaggio a secco, Internet, Autonoleggio, Banco escursioni, Fax, Internet Wi-Fi, Internet Wi-Fi gratuita, Servizio navetta (a pagamento).

**Ristorazione:** Bar, Snack-Bar.

**Check-in** dalle 14:00 entro 00:00

**Check-out** dalle 01:00 entro 12:00

**Carta di Credito**   

**Website:** [www.hotelarearoma.net](http://www.hotelarearoma.net)

**Email:** [info@hotelarearoma.net](mailto:info@hotelarearoma.net)

**Recommended fee:** DUS Room | € 94,00  
 Single Room | € 119,00  
 Double Room | € 109,00



**HOTEL AMERICAN PALACE EUR** | *Category: 4 stars*



**Generale:** Parcheggio, Servizio reception/portiere, Quotidiani, Giardino, Camere non-fumatori, Accesso per ospiti disabili, Ascensore, Check-in e check-out rapidi, Cassetta di sicurezza, Camere insonorizzate, Riscaldamento, Deposito bagagli, Aria condizionata.

**Servizi:** Servizio in camera, Sale riunioni/banchetti, Servizio lavanderia, Lavaggio a secco, Servizio stireria, Internet, Fax, Internet Wi-Fi, Internet Wi-Fi gratuita.

**Ristorazione:** Bar, Prima colazione in camera.

**Check-in** dalle 15:00 entro 23:30

**Check-out** dalle 05:30 entro 12:00

**Carta di Credito**



**Promotional code for online registrations:** CARTE 2014

**Website:** [www.americanpalace.it](http://www.americanpalace.it)

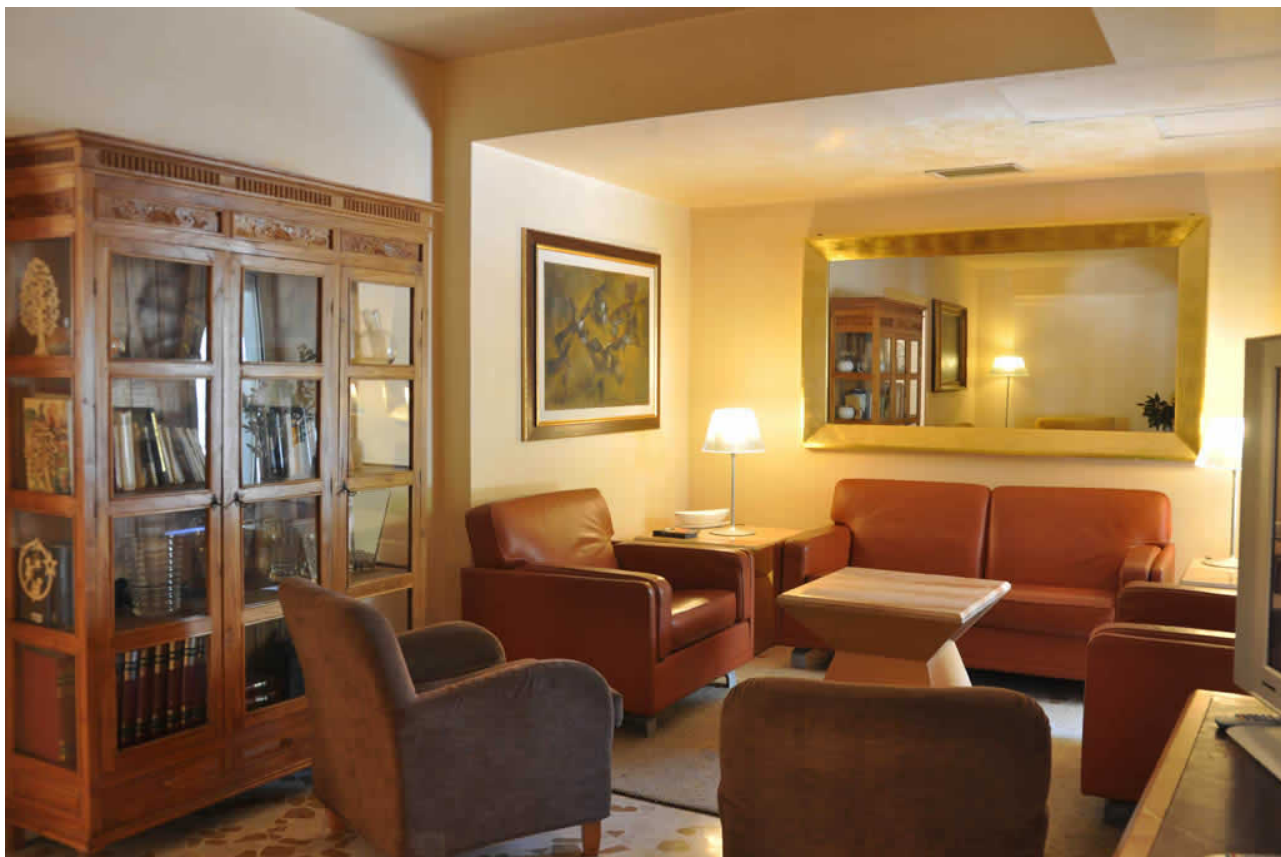
**Email:** [info@americanpalace.it](mailto:info@americanpalace.it)

**Recommended fee:**

DUS Room	€ 69,00
Single Room	€ 74,00
Double Room	€ 79,00



**HOTEL TRE FONTANE** | *Category: 3 stars*



**Generale:** Animali ammessi, Servizio reception/portiere, Quotidiani, Terrazza, Camere non-fumatori, Accesso per ospiti disabili, Parcheggio gratuito, Ascensore, Cassetta di sicurezza, Riscaldamento, Deposito bagagli, Aria condizionata.

**Servizi:** Servizio in camera, Sale riunioni/banchetti, Centro Business, Servizio stireria, Internet, Banco escursioni, Fax, Internet Wi-Fi, Internet Wi-Fi gratuita.

**Ristorazione:** Ristorante, Bar, Prima colazione in camera.

**Check-in** dalle 12:00

**Check-out** entro 12:00

**Carta di Credito**



**Website:** [www.hoteltrefontane.it](http://www.hoteltrefontane.it)

**Email:** [info@hoteltrefontane.it](mailto:info@hoteltrefontane.it)

**Recommended fee:** DUS Room | € 110,00  
Double Room | € 130,00





## **HOTEL LIST NEAR CARTE 2014**

Here following a list of hotels located near the Conference venue.

Please note that transaction with the hotel are in responsibility of individual guests. We strongly recommend to make, as soon as possible, the hotel reservation.

### ❖ **CASA SAN BERNARDO \*\*\***

(Via Laurentina, 289 | Tel: 06.5407651)

- **Website:** [www.casasanbernardo.it](http://www.casasanbernardo.it)
  - **Email:** [info@casasanbernardo.it](mailto:info@casasanbernardo.it)
  - **Distance:** 1,7 km
- 

### ❖ **HOTEL SUPERIOR \*\*\***

(Piazzale M. Champagnat, 2 | Tel: 06.54220627)

- **Website:** [www.villaeur.it](http://www.villaeur.it)
  - **Email:** [info@villaeur.it](mailto:info@villaeur.it)
  - **Distance:** 2,1 km
- 

### ❖ **OLY HOTEL \*\*\***

(Via Santuario Regina Apostoli, 36 | Tel: 06.594441)

- **Website:** [www.olyhotel.it](http://www.olyhotel.it)
  - **Email:** [info@olyhotel.it](mailto:info@olyhotel.it)
  - **Distance:** 2,4 km
- 

### ❖ **STELLE D'EUROPA \*\*\***

(Via dei Genieri, 11 | Tel: 06.50512485 – 06.50512486)

- **Website:** [www.stelleeuropa.it](http://www.stelleeuropa.it)
  - **Email:** [info@stelleeuropa.it](mailto:info@stelleeuropa.it)
  - **Distance:** 3 km
- 

### ❖ **EUR SUITE \*\*\*\***

(Via Prezzolini, 5)

- **Website:** [www.hotelesuiterome.com](http://www.hotelesuiterome.com)
  - **Distanza:** 3,7 km
- 

### ❖ **DERBY HOTEL \*\*\***

(Via di Vigna Pozzi, 7 | Tel: 06.5134955 – 06.5136978)

- **Website:** [www.hotelderby.it](http://www.hotelderby.it)
  - **Email:** [info@hotelderby.it](mailto:info@hotelderby.it)
  - **Distance:** 3,8 km
- 

### ❖ **HOTEL CARAVEL \*\*\***

(Via Cristoforo Colombo, 124/C | Tel: 06.5180789)

- **Website:** [www.hotelcaravel.it](http://www.hotelcaravel.it)
  - **Email:** [info@hotelcaravel.it](mailto:info@hotelcaravel.it)
  - **Distance:** 4,3 km
-



❖ **ORTO DI ROMA \*\*\***

(Via di Grotta Perfetta, 551 | Tel: 06.5180789)

- **Website:** [www.hotelortodiroma.com](http://www.hotelortodiroma.com)
- **Email:** [info@hotelortodiroma.com](mailto:info@hotelortodiroma.com)
- **Distance:** 4,3 km

---

❖ **ANTICA LOCANDA PALMIERI \*\*\***

(Via di Grotta Perfetta, 555/A | Tel: 06.51530428)

- **Website:** [www.anticolocandapalmieri.it](http://www.anticolocandapalmieri.it)
- **Email:** [info@anticolocandapalmieri.it](mailto:info@anticolocandapalmieri.it)
- **Distance:** 4,5 km

---

❖ **RELAIS HORTI FLAVIANI \*\*\***

(Via delle Sette Chiese, 290 | Tel: 06.45554800)

- **Website:** <http://www.hortiflaviani.it>
- **Distance:** 4,8 km